

Bilaga Vårdbidrag

Vårdbidragsnivå i samtliga län



Svenska
Diabetesförbundet

Diagram 1 Östergötland, totalt 381 barn

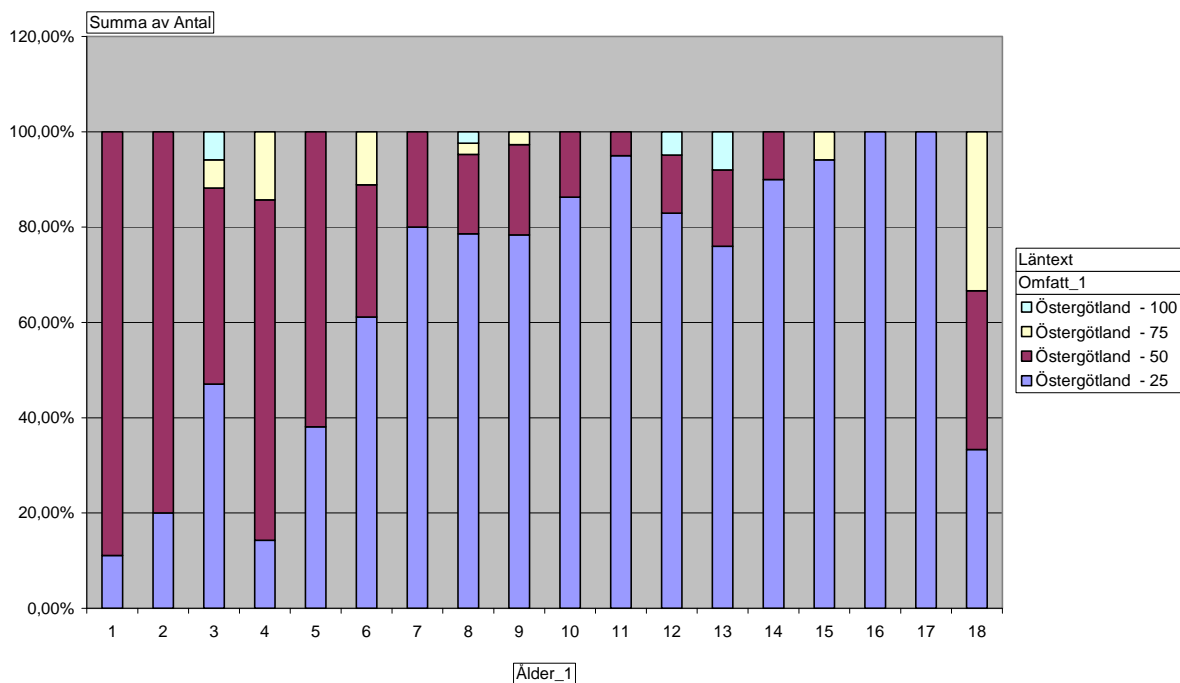


Diagram 2 Örebro, totalt 238 barn

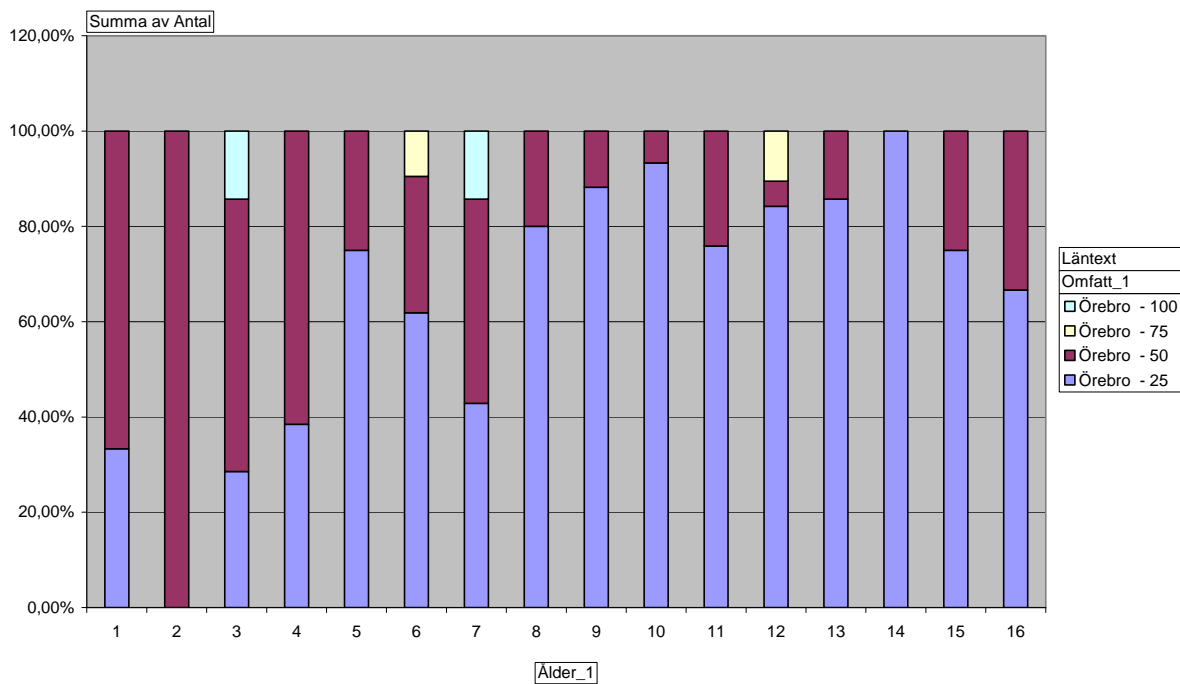


Diagram 3 Västra Götaland, totalt 1172 barn

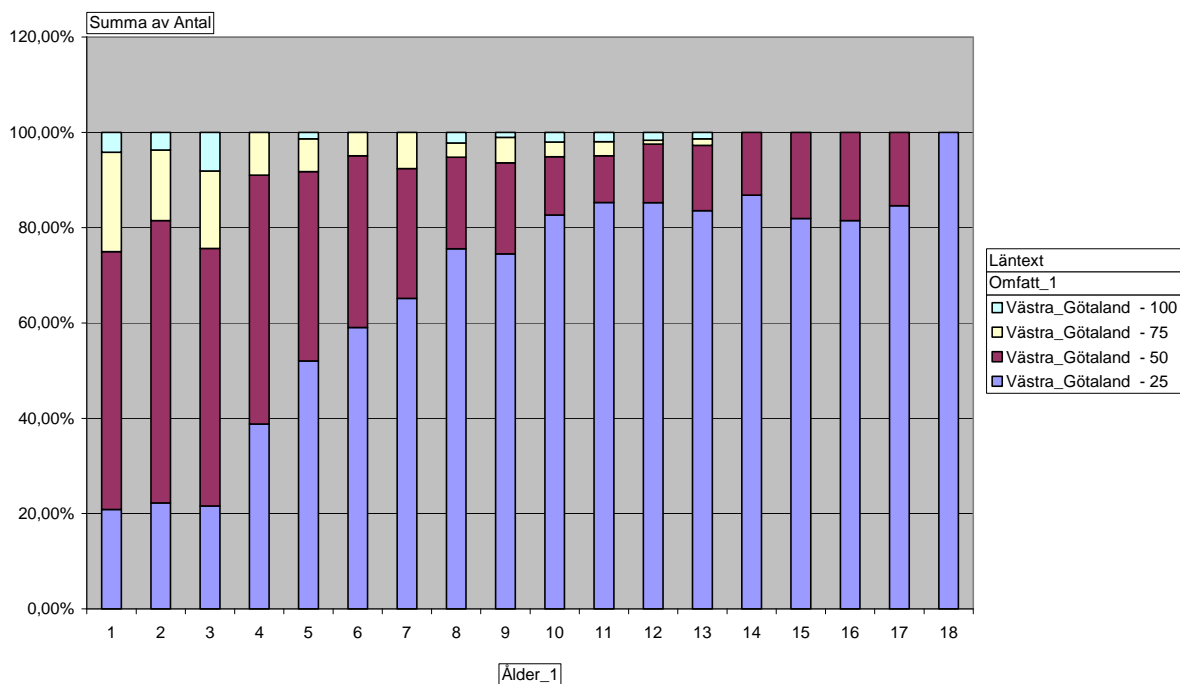


Diagram 4 Västmanland, totalt 214 barn

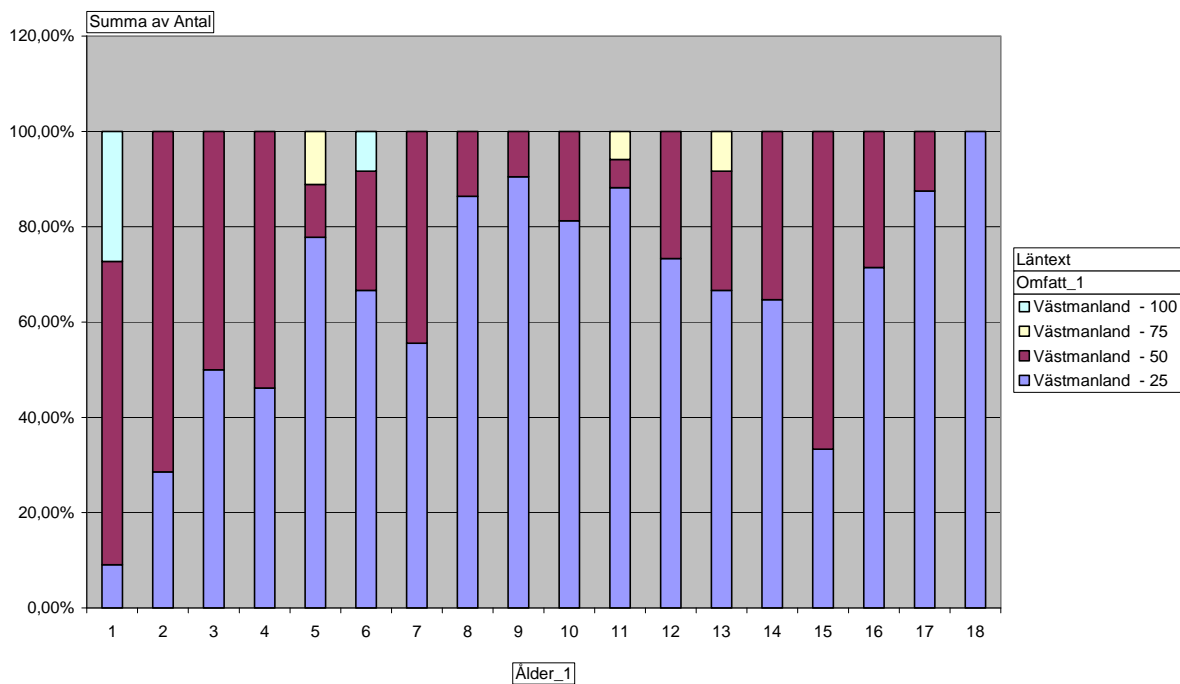


Diagram 5 Västernorrland, totalt 159 barn

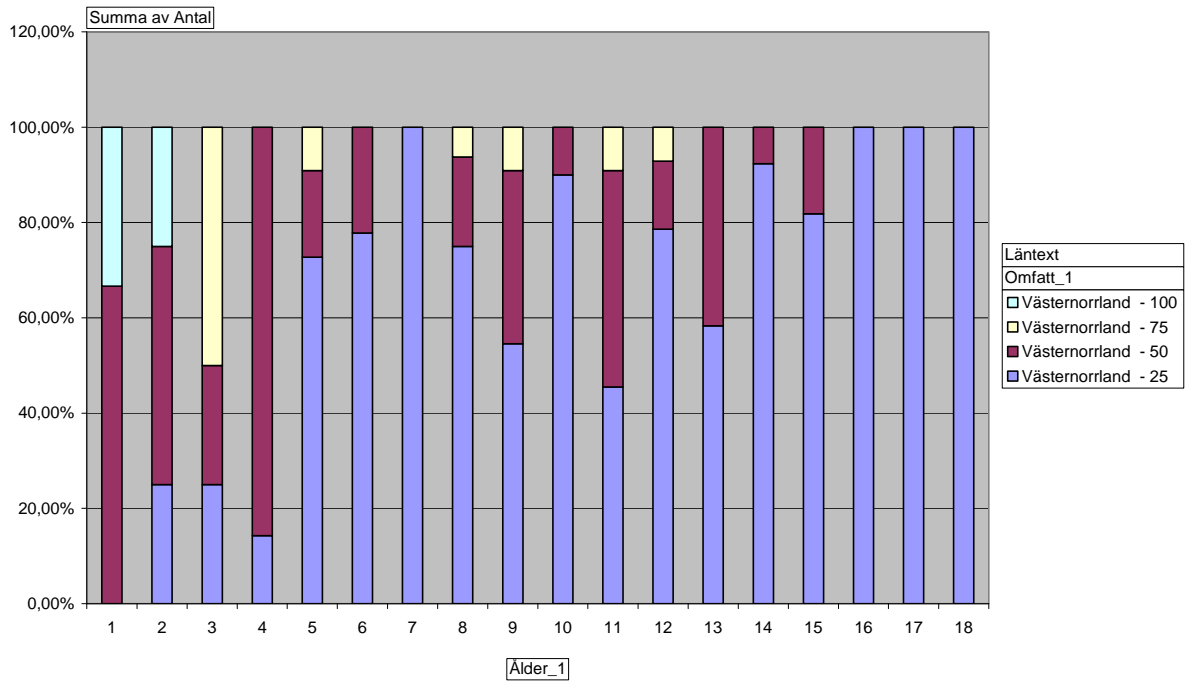


Diagram 6 Västerbotten, totalt 217 barn

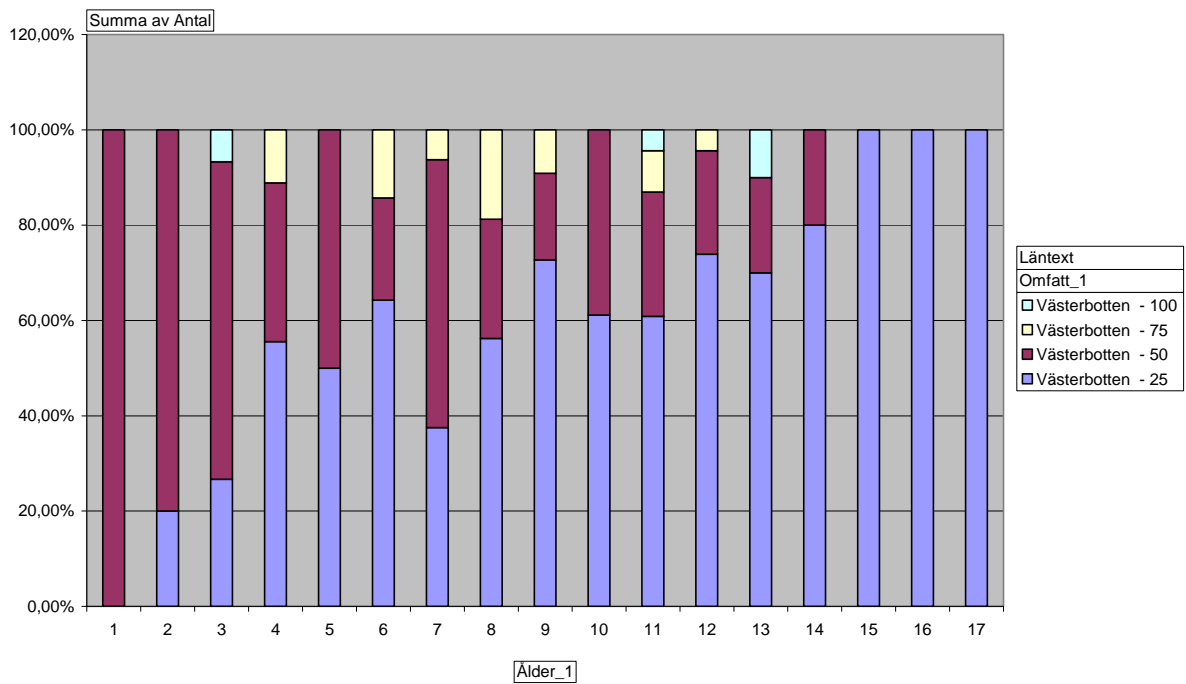


Diagram 7 Uppsala, totalt 257 barn

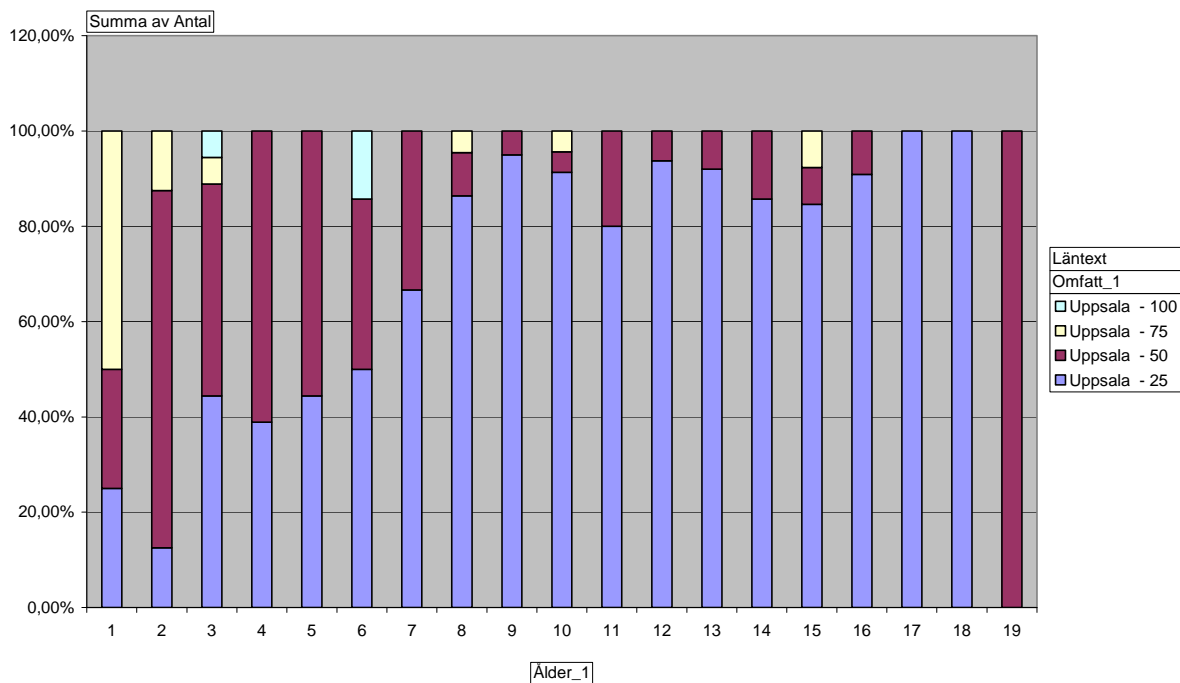


Diagram 8 Norrbotten, totalt 172 barn

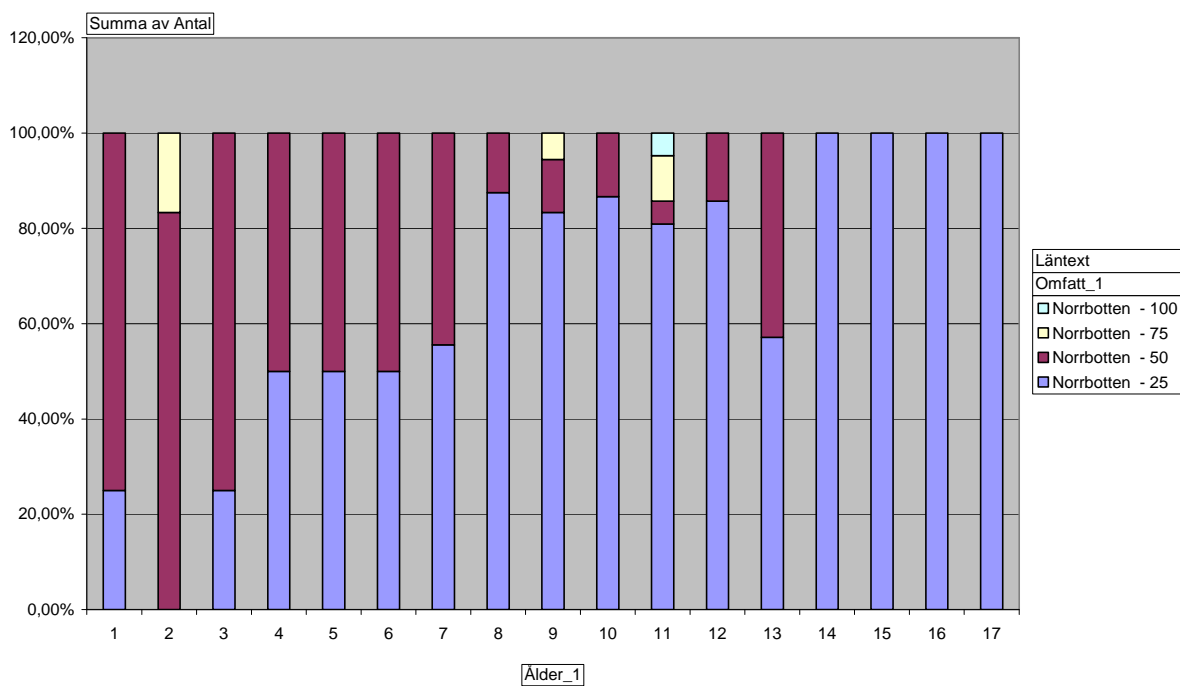


Diagram 9 Jämtland, totalt 111 barn

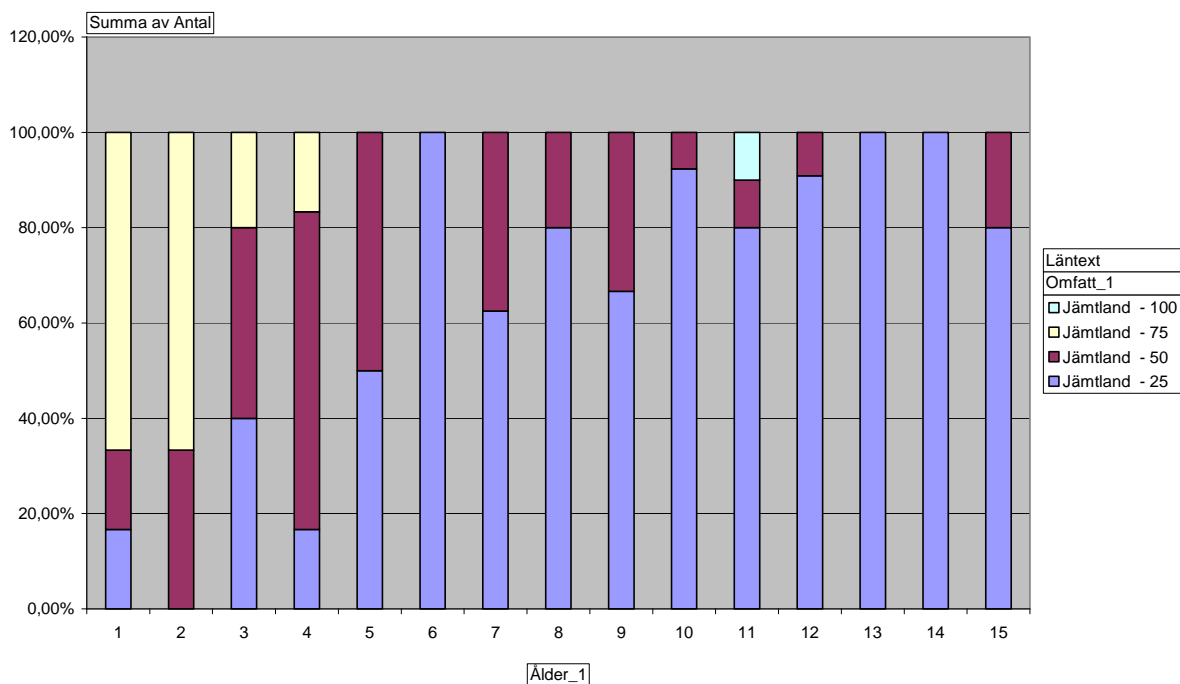


Diagram 10 Jönköping, totalt 275 barn

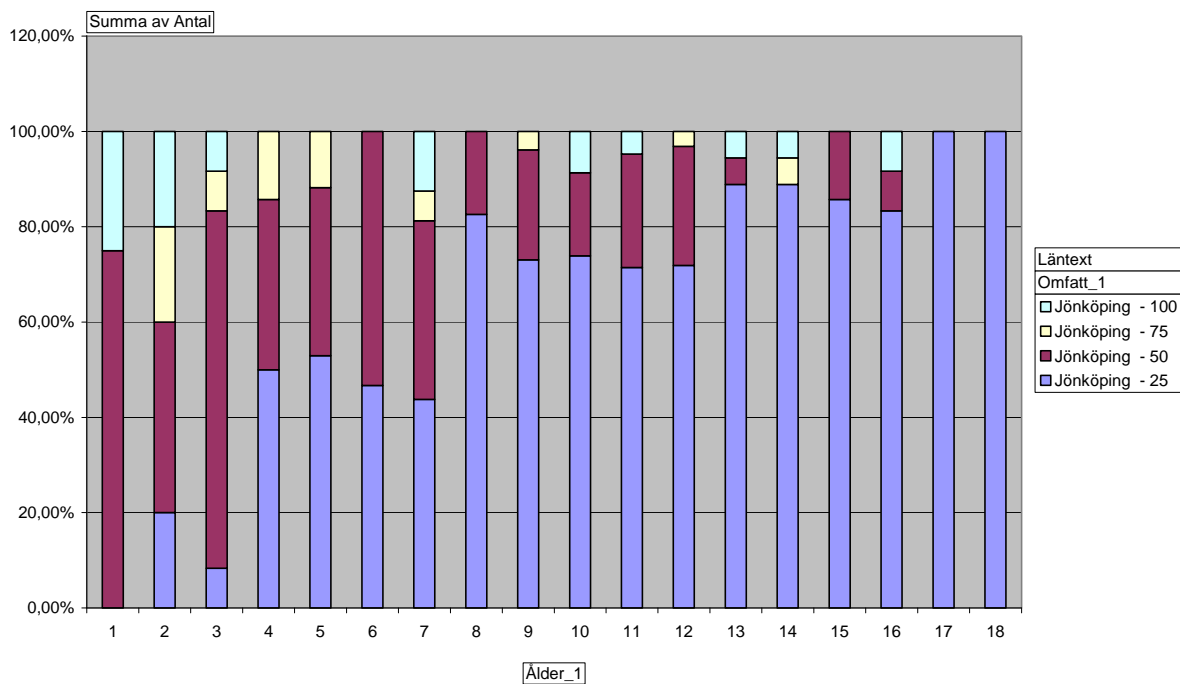


Diagram 11 Halland, totalt 263 barn

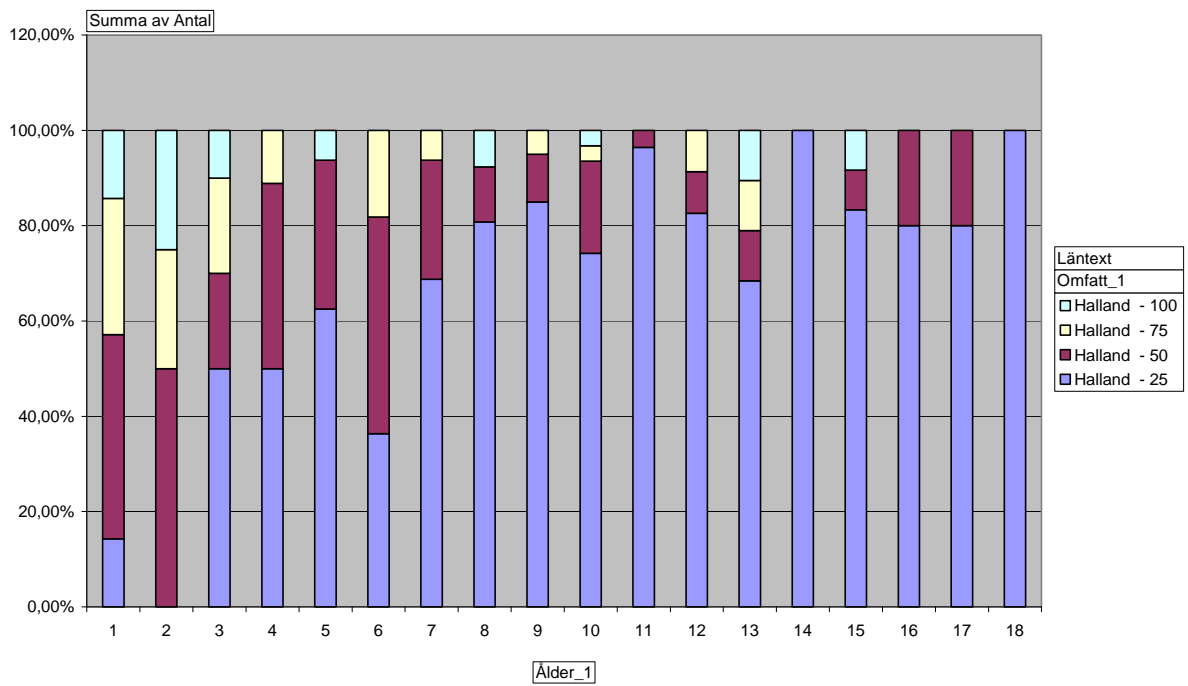


Diagram 12 Gävleborg, totalt 241 barn

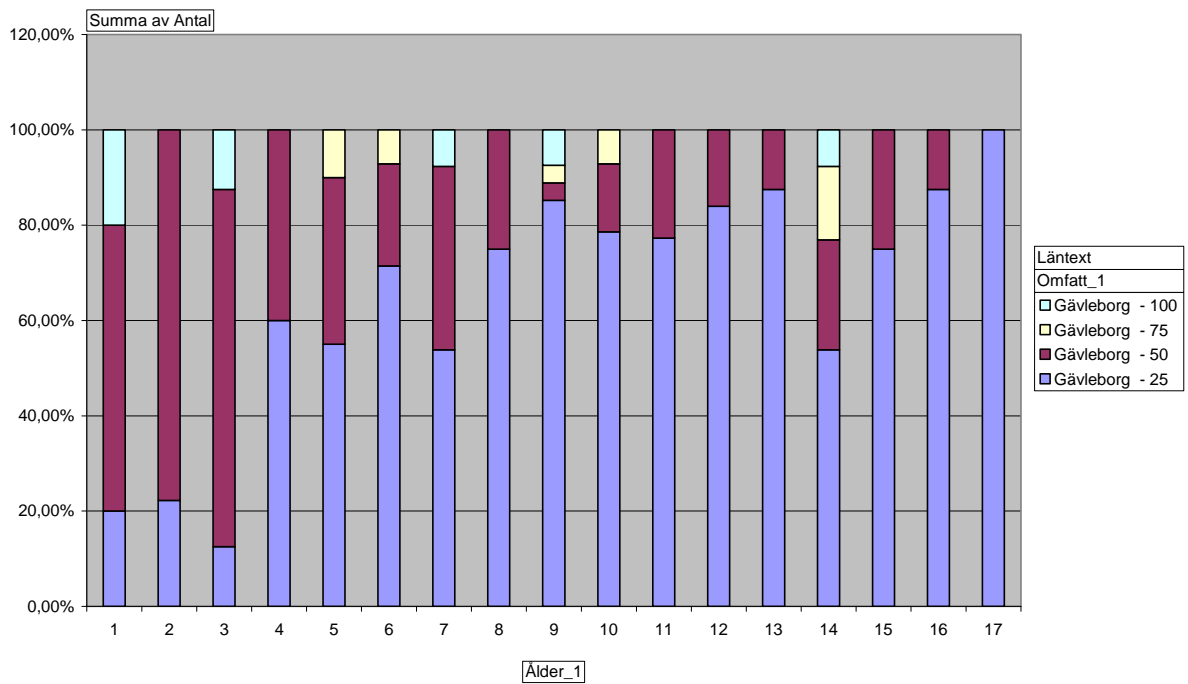


Diagram 13 Gotland, totalt 55 barn

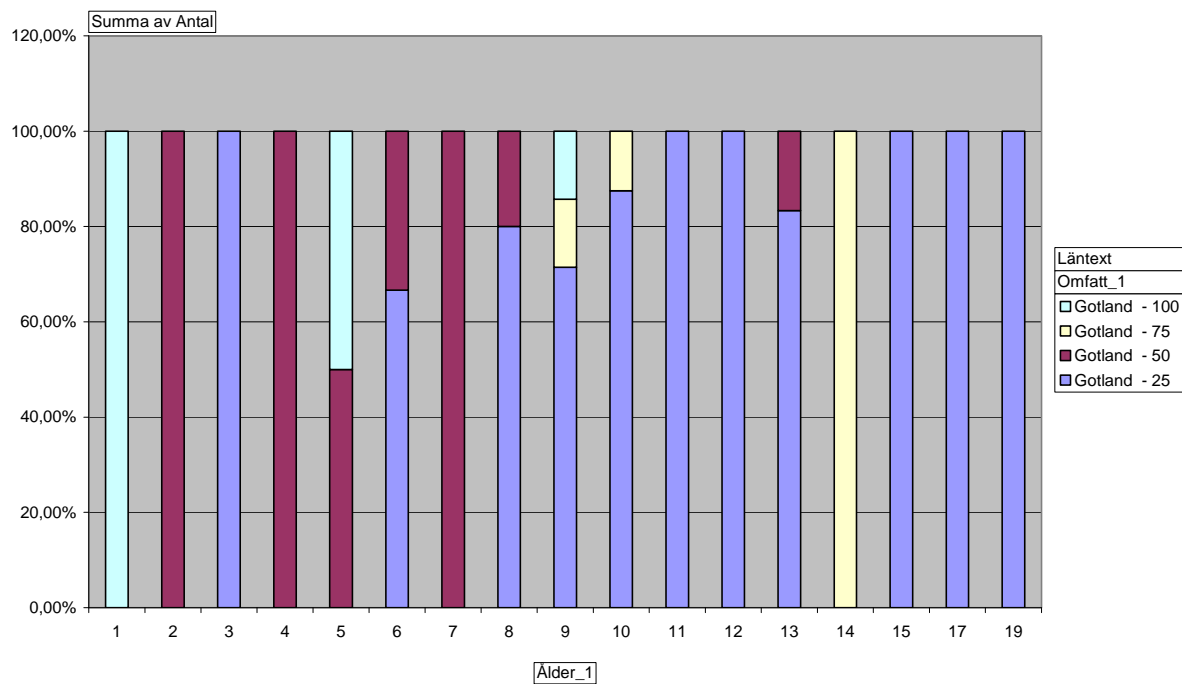


Diagram 14 Dalarna, totalt 174 barn

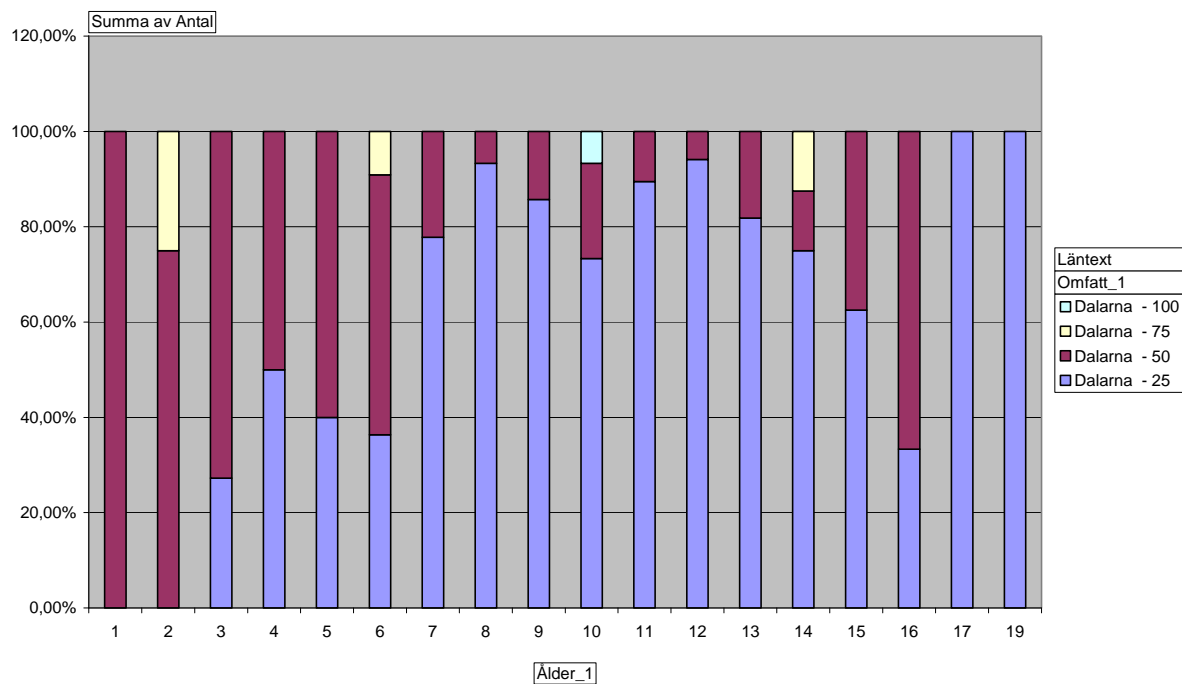


Diagram 15 Blekinge, totalt 125 barn

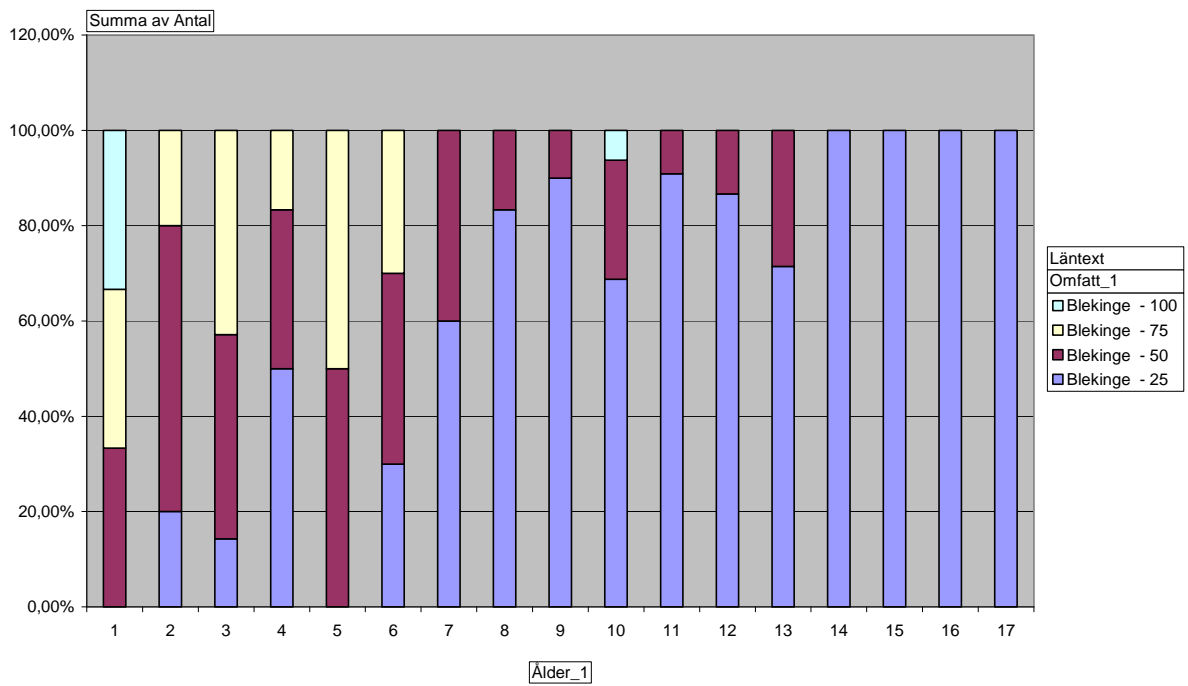


Diagram 16 Stockholm, totalt 1217 barn

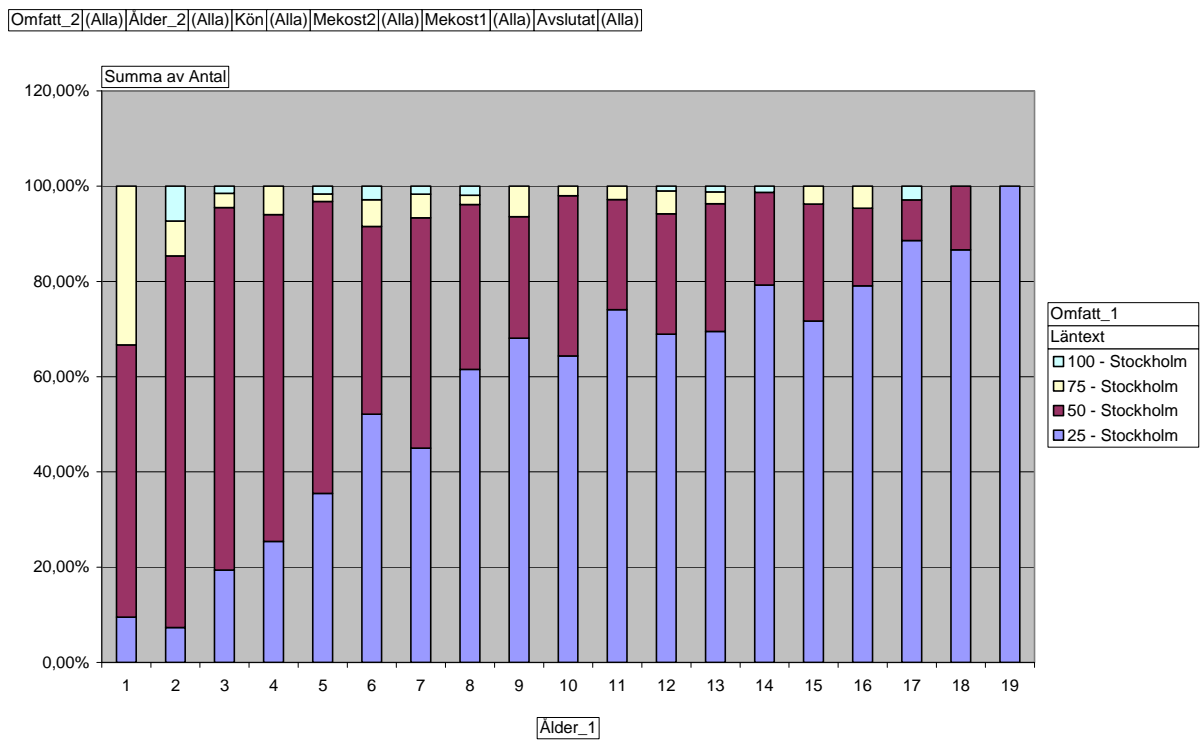


Diagram 17 Skåne, totalt 854 barn

Omfatt_2|(Alla)|Ålder_2|(Alla)|Kön|(Alla)|Mekost2|(Alla)|Mekost1|(Alla)|Avslutat|(Alla)

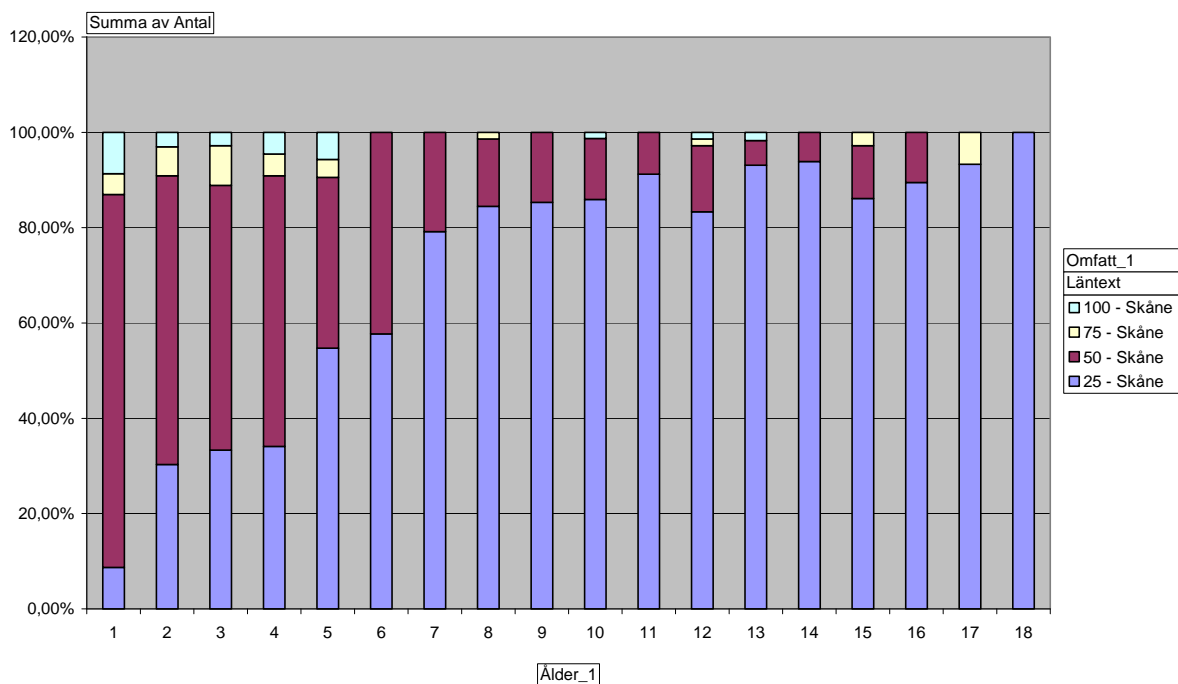


Diagram 18 Kronoberg, totalt 146 barn

Omfatt_2|(Alla)|Ålder_2|(Alla)|Kön|(Alla)|Mekost2|(Alla)|Mekost1|(Alla)|Avslutat|(Alla)

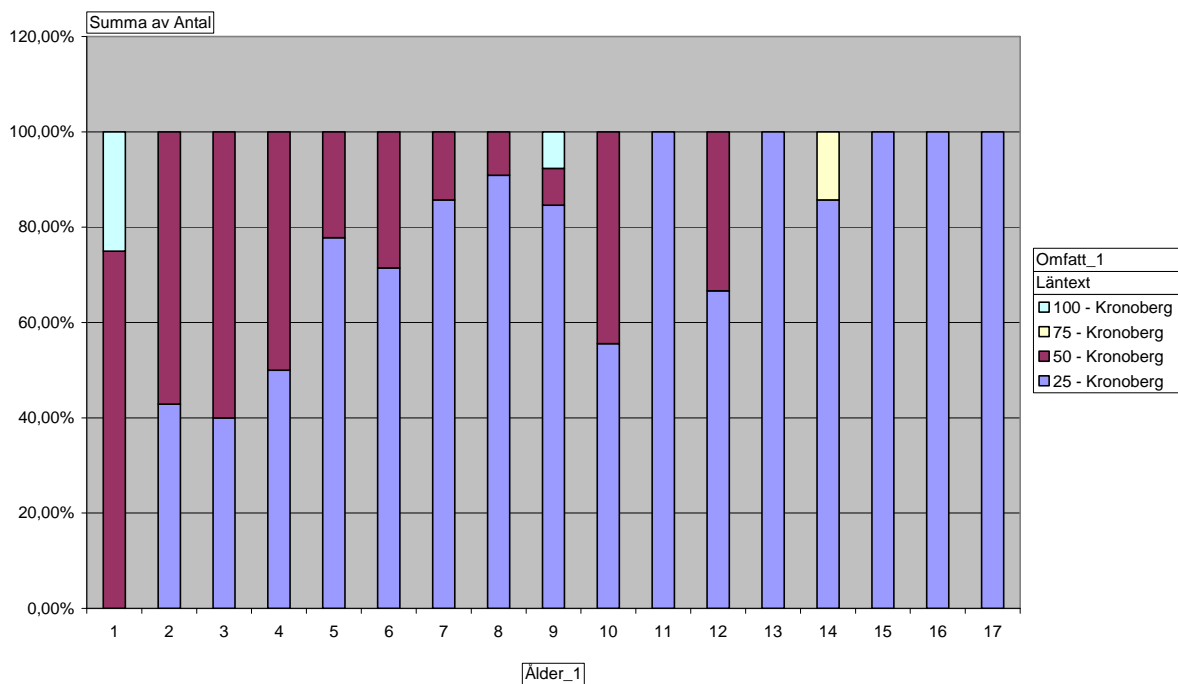


Diagram 19 Värmland, totalt 185 barn

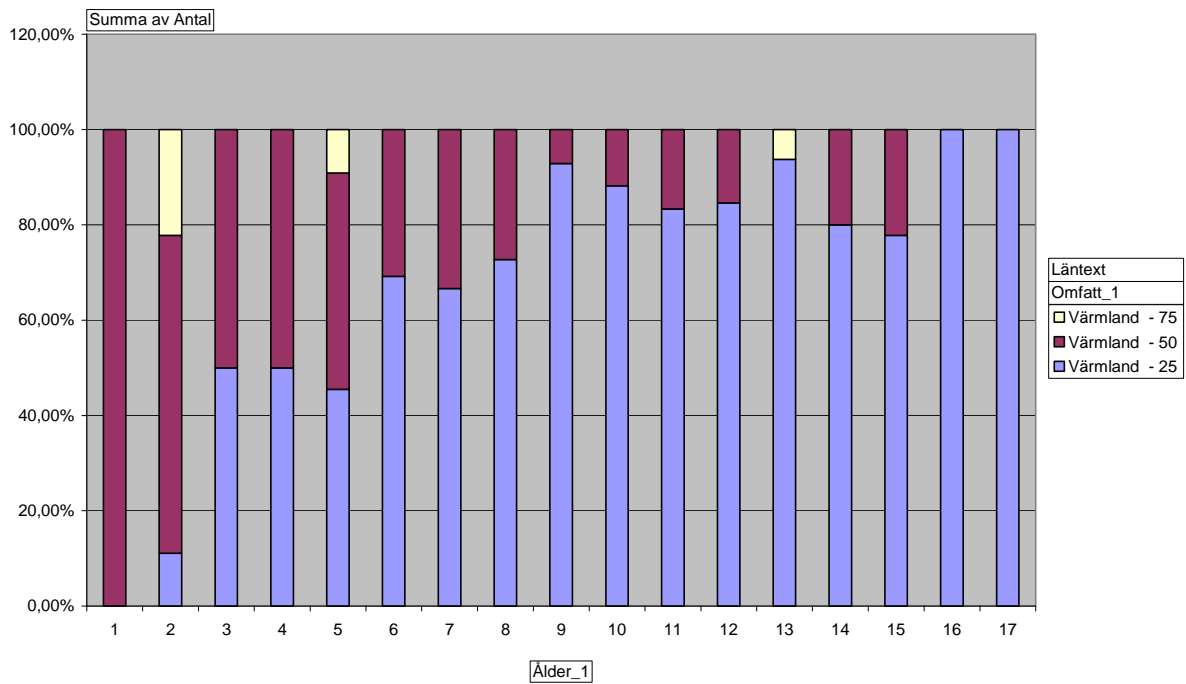


Diagram 20 Södermanland, totalt 241 barna

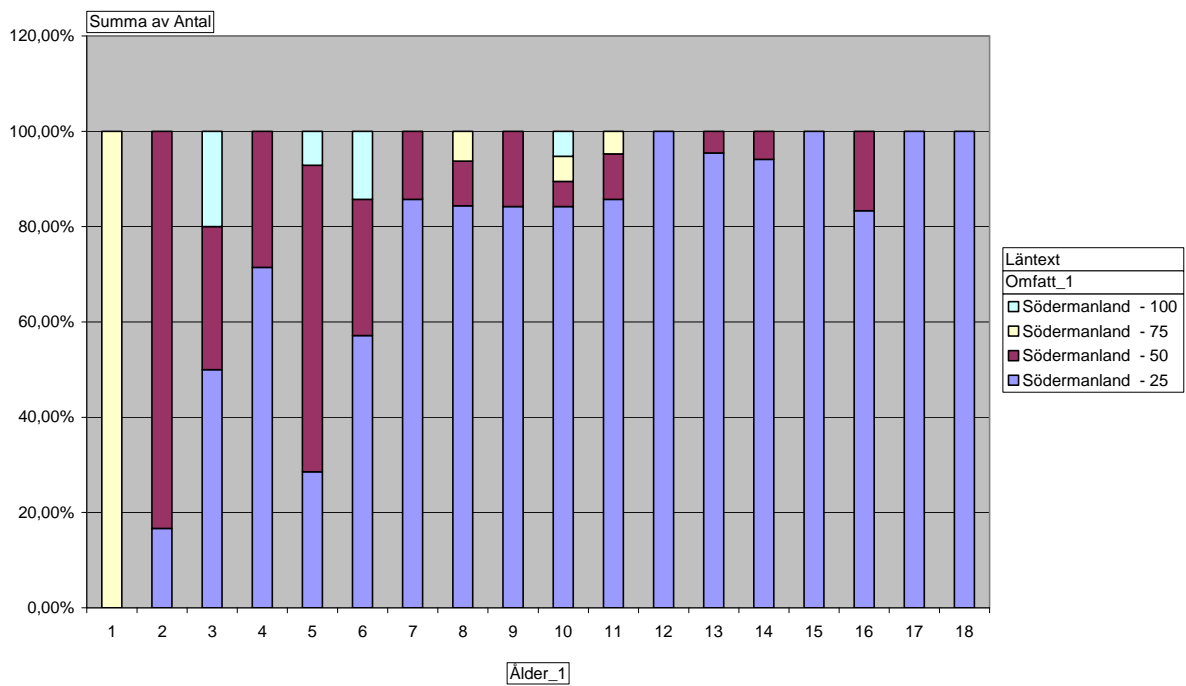


Diagram 21 Kalmar, totalt 163 barn

